



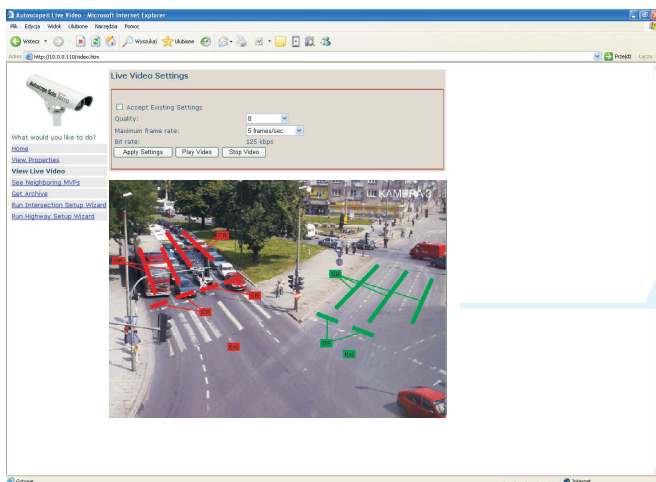
## Features

- MPEG-4 digital streaming video output
- Internet browser service
- Dynamic, global vision view
- Automatic monitoring
- Global access to configuration and programming
- Advanced management of users accounts
- Universal PAL camera input
- Data storage
- Switch on automatic test
- Visual signal indicates communication, picture, data transfer and power
- IP addressable
- Single (1) camera video processor channel (PAL, CCIR, NTSC or RS-170)
- Dual-core processor for advanced image processing
- EasyLink broadband communications
- View video from remote locations using Internet browser
- Configuration Wizard for highways
- Backplane provides convenient terminations
- Shadow processing
- Image quality control
- Fail-safe outputs



## Applications

- Vehicle detection and monitoring in one
  - Pedestrian detection
  - Dropped item detection
  - Fire/smoke detection
- Traffic data and speed measurement
  - Accident detection
  - Stopped vehicle detection
- Traffic incident management for motorways, tunnels and bridges
  - Junction control
- Traffic data collection and analysis
- Work zone safety and traffic control
- Traveler information systems
  - Journey time (travel time)
- Remote video surveillance
- Safety and security



# Autoscope RackVision

**Terra**

visionary solutions  
autoscope.pl

## Specifications

### Power:

12 to 24 VDC, 11W maximum  
Consumption, current  
12VDC: 11W, 900mA  
24VDC: 11W, 500mA

### Video:

#### Input

PAL, CCIR, NTSC or RS170  
75Ohm Vpp, SMA connector on back

#### Output

1 Vpp, BNC connector on front  
1 Vpp, SMA connector on back  
PAL or NTSC  
MPEG-4 digital streaming video via EasyLink

### Communications:

EasyLink Ethernet 10/100 Mb/s communication  
via RJ-45 connector on front

#### Detector I/O:

32 (96-pin DIN version) outputs  
16 (96-pin DIN version) inputs  
Serial I/O via EasyLink

### Environmental:

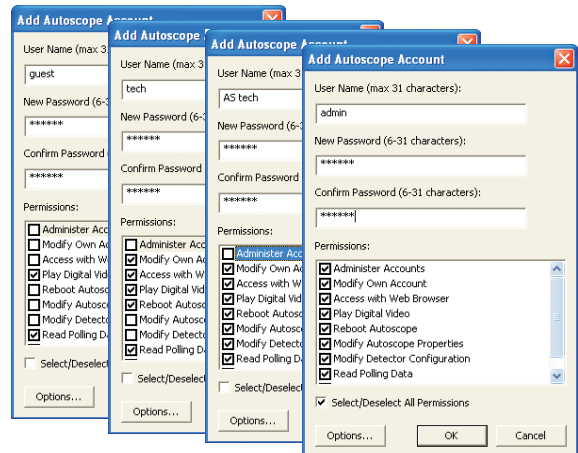
-34° C to +74° C  
0 to 95% relative humidity

### Dimensions and Weight:

H x W x L (3U x 160 mm)  
130 mm x 20 mm x 191 mm  
(5.10 in x 0.80 in x 7.5 in)  
0.16 kg (0.35 lb) basic unit

### Regulatory:


CE EN 55022, EN 61000-6-1, RoHS



What would you like to do?  
[Home](#)  
[View Properties](#)  
[View Live Video](#)  
[See Neighboring MVPs](#)  
[Get Archive](#)  
[Run Intersection Setup Wizard](#)  
[Run Highway Setup Wizard](#)

**Autoscope® MVP Home Page**

Model:	RackVision Terra Euro
IP Address:	10.0.0.30
CPU Identifier:	080130FFDD345720
Software Version:	9.1.0, 2008,01,31 16:41:44
Time of Last Reboot:	2008,02,25 09:53:48
Mode:	Detect
Active Severe Errors:	0
Load Index:	62
Detector Configuration Status:	Running
Video Format:	PAL
Video Signal Quality (%):	100

Description 1: \_\_\_\_\_  
Description 2: \_\_\_\_\_  
Description 3: \_\_\_\_\_  
Description 4: \_\_\_\_\_

Ideally suited for tunnels, roadways, bridges and junction applications, this Autoscope video detection solution delivers high performance vehicle detection for junction control traffic data collection and incident management. With innovative Terra Technology you will appreciate the dual-core processing power, web browser communications, streaming digital video and ease of setup and use. EasyLink™ broadband connectivity provides simple connection to your traffic system communications network. Each detector card slides into standard rack systems and easily integrates with Autoscope communications networks. With an array of capabilities, the Autoscope® RackVision™ Terra™ detector card is a cost-effective and versatile solution for transportation control and management.

