



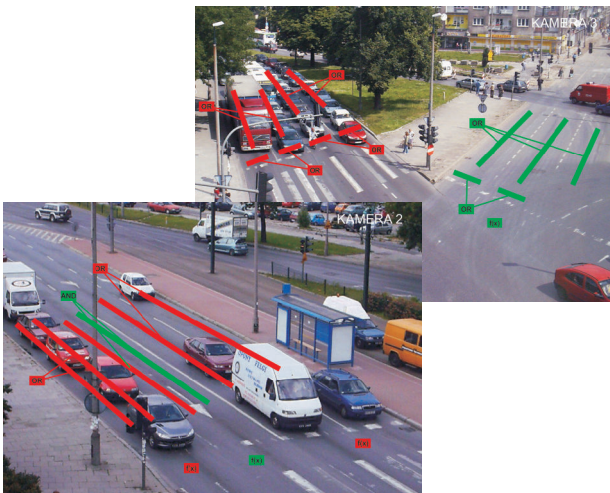
## Features

- Vehicle presence detection
- Dual-camera video processor
- 64-pin DIN connector backplane provides convenient terminations for power, communications, detector I/O and video I/O
- Vehicle presence outputs via backplane screw terminations
- Non-volatile memory data storage
- Self test on power-up
- LED indicates status for power, communications, video, data processing, and detector I/O
- Low power consumption
- Universal PAL camera input
- Shadow processing
- Image quality control
- Real-time view



## Applications

- Intersection control
- Automatic video supervision
- Vehicle detection and monitoring in one
- Increase safety on roads
- Traffic and safety area control during road works





## Specifications

### Power:

12 to 24 VDC, 11W maximum  
Consumption, current draw  
12 VDC, 6W, 500mA  
24 VDC, 7W, 290mA

### Video:

Input  
PAL, CCIR, NTSC, RS170  
Two Channels 75Ohm 1 Vpp, SMA connector  
Output  
1 Vpp, BNC connector on front  
PAL or NTSC

### Communications:

RS-232 Supervisor communication via Db9  
connector on front (9600 to 230K Baud)  
Multi-drop RS-485 Supervisor communication  
on back

### Detector I/O:

16 outputs  
4 inputs

### Environmental:

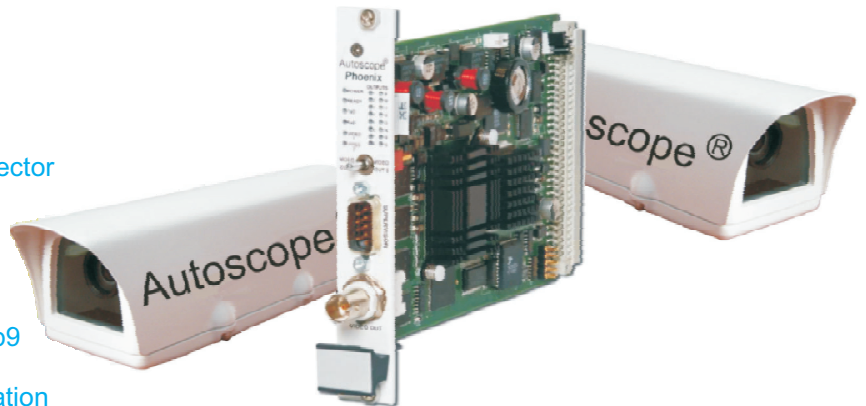
-34° C to +74° C  
0 to 95% relative humidity

### Dimensions and Weight:

H x W x L (3U x 160mm)  
130 mm x 20 mm x 207 mm  
(5.12 in x 0.80 in x 8.15 in)  
0.16 kg (0.35 lb)

### Regulatory:

CE EN 55022, EN 61000-6-1, RoHS



## Setup and operation

The Autoscope Phoenix system is easy to install, set up, and operate to meet your vehicle detection requirements.

Processor slides directly into detector racks. Setup uses simple mouse and keyboard commands to create up to 12 virtual detection zones per camera for vehicle presence applications.

